



(2875) Lagerkvist – Two Unexplained Observations

Tim Haymes ¹

1- British Astronomical Association

tvh.observatory@btinternet.com

Background :

Two observers in England were observing a possible occultation of **4U 461-131617** (R 10.7) by **(2875) Lagerkvist** on 2018 Sep 23rd. This was a low probability prediction with an asteroid diameter of 10km and a maximum duration of 0.7sec. Mag Drop was R 5.2.

Both observers recorded a single chord with a small dip in flux and no discernible step. There was a time offset of 1.7 s. Can this be explained ?

Tim Haymes (TH) towards the EAST reported a flux drop of 0.4 mag at 25fps with duration 0.60s +/- 0.1 at mid time of 2204 19.9s UT

Peter Tickner (PT) towards the WEST reported a similar low flux drop at 20 fps with duration 0.55s +/-0.1 at mid time of 2204 18.2s UT

PT recorded the event 1.7sec before TH. BUT the ground motion was East -> West SO the shadow should have reached TH first ? This displacement from EURASTER.NET is shown on the right with a sketch by TH on the Sky Plane.

Does this illustrate a possible binary asteroid solution ?

Equipment:

TH 30cm F/4 WAT-910HX + GPSBOXSPRITE2-u VTI
 PT 30cm SCT F3.3, ZWO ASI174MM + GPS TimeBox

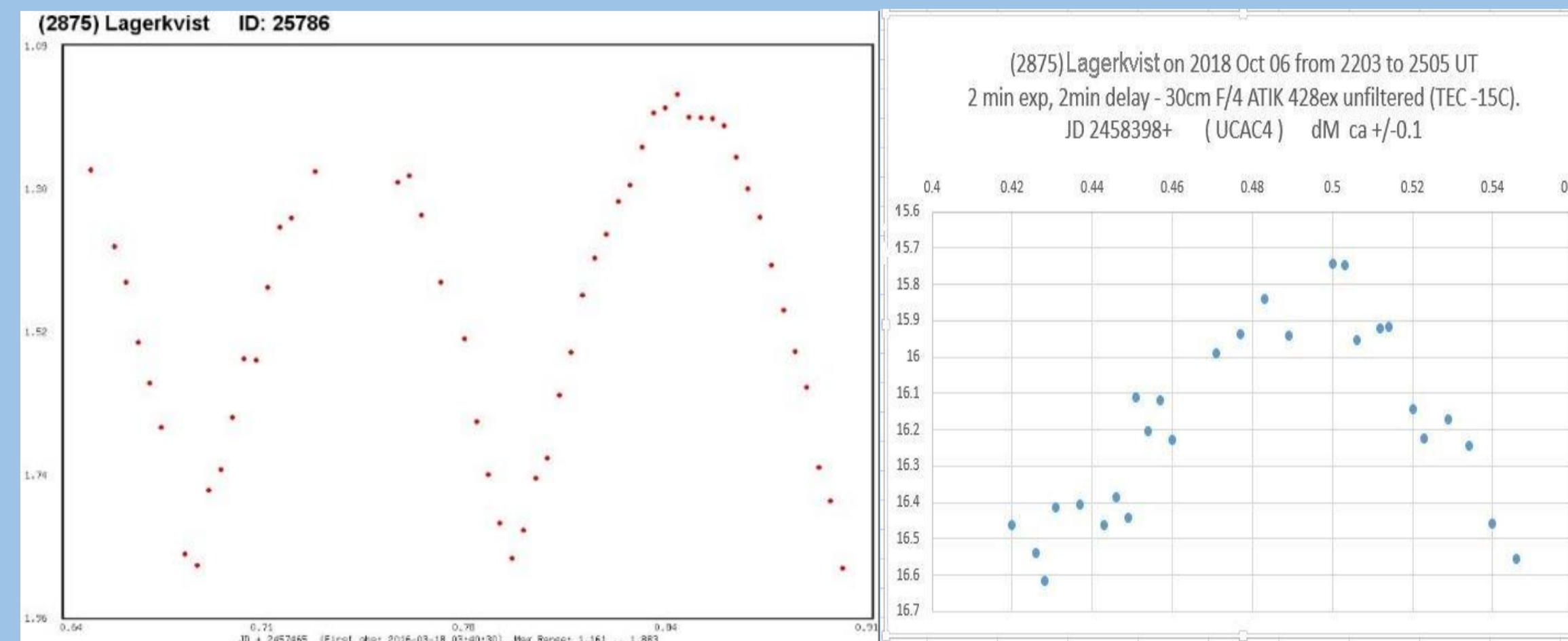
Discussion:

What do the occultation flux curves represent?

A fainter companion of the primary was occulted – but the time shift remains unsolved. * New Double*

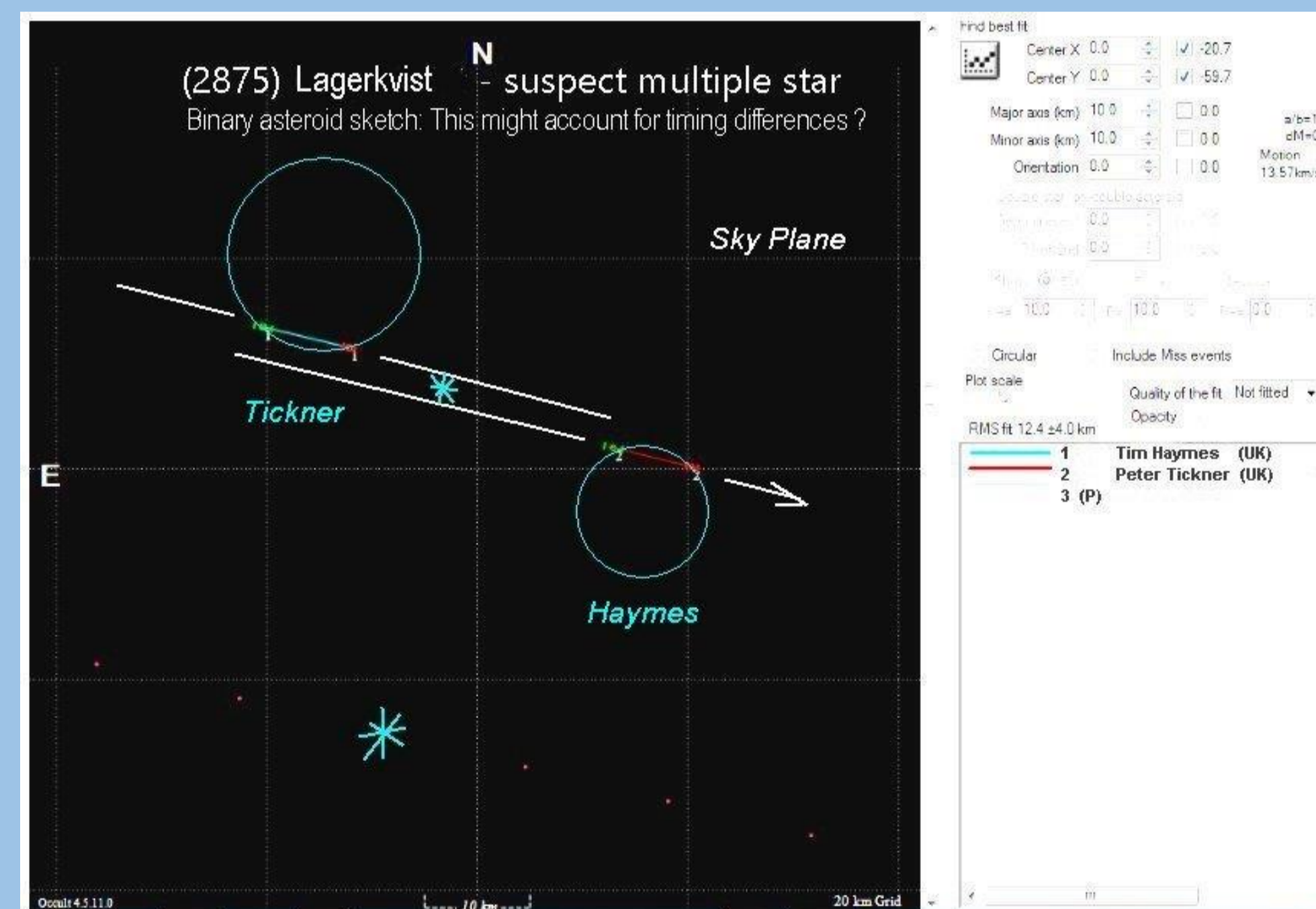
- a binary asteroid perhaps ?
- more than one companion perhaps?
- OR a timing error in one observation?

Does the rotation light curve suggest anything ? [above right]



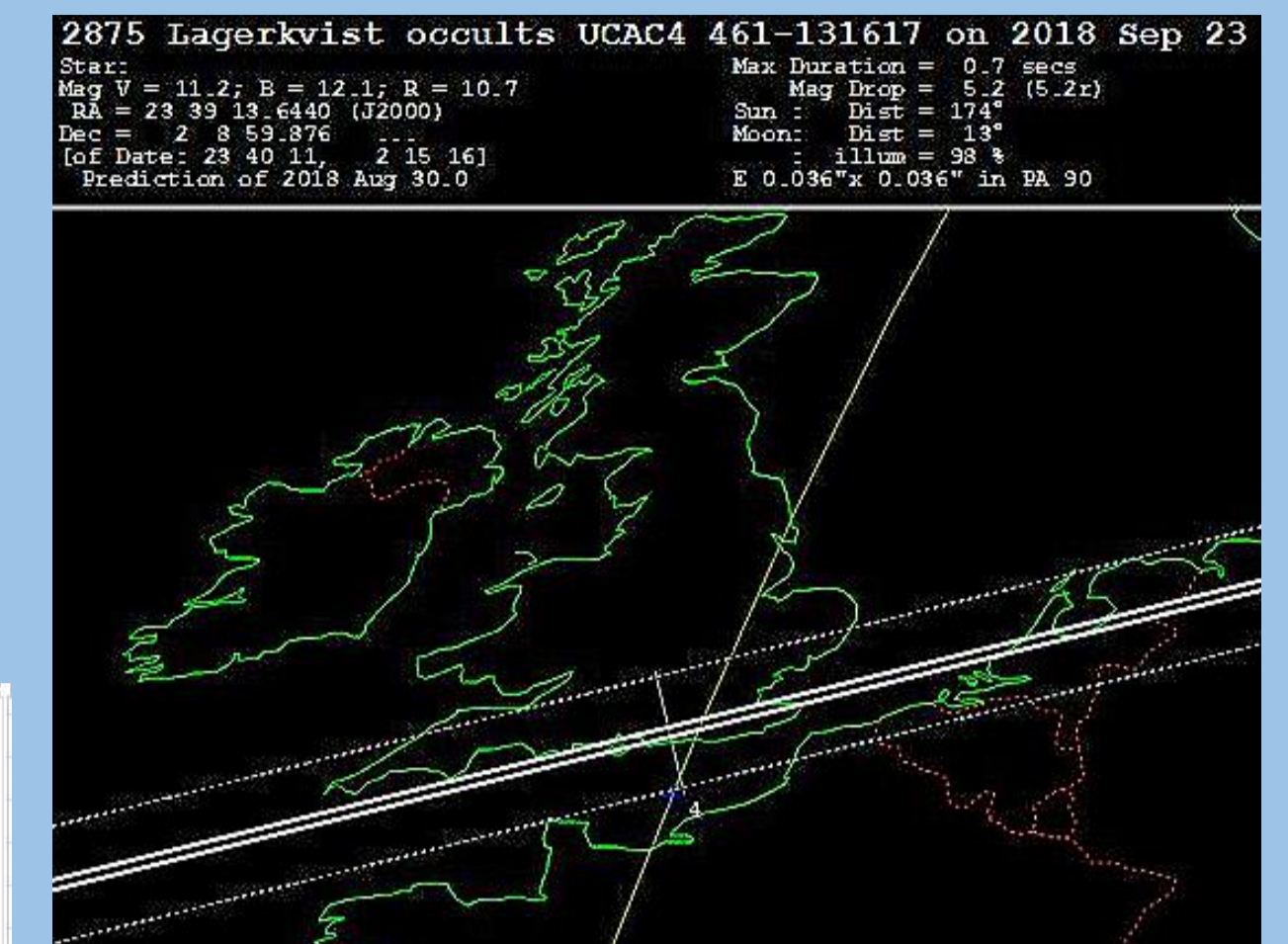
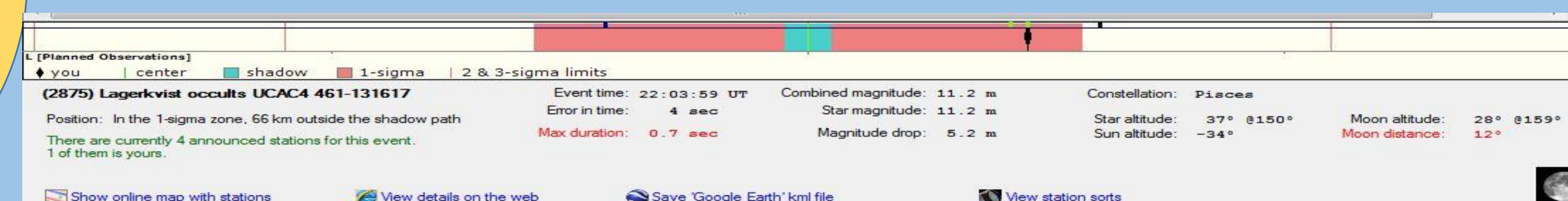
ALCDEF database rotation Light Curve.

(2875) photometry by T. Haymes with Astrometrica + UCAC4

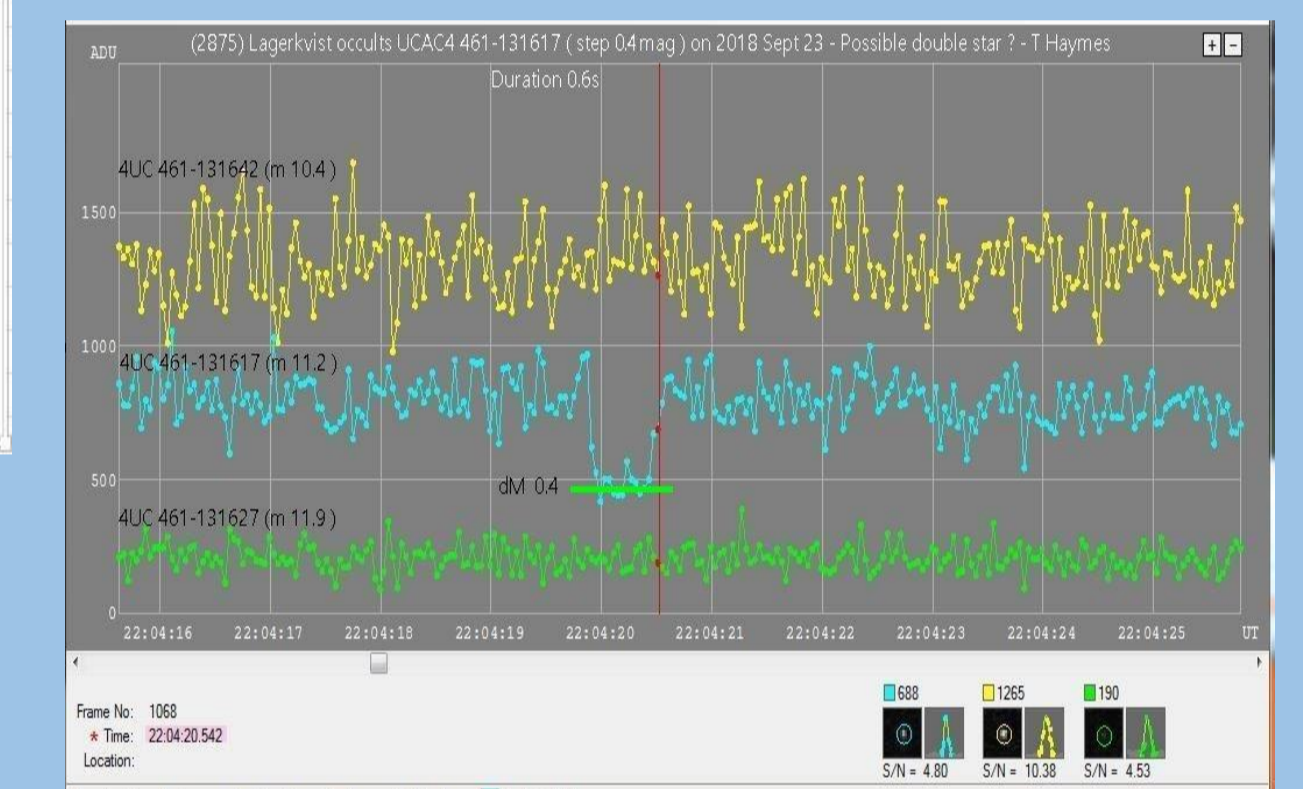


Chords by E Frappa with hypothesis added by TH

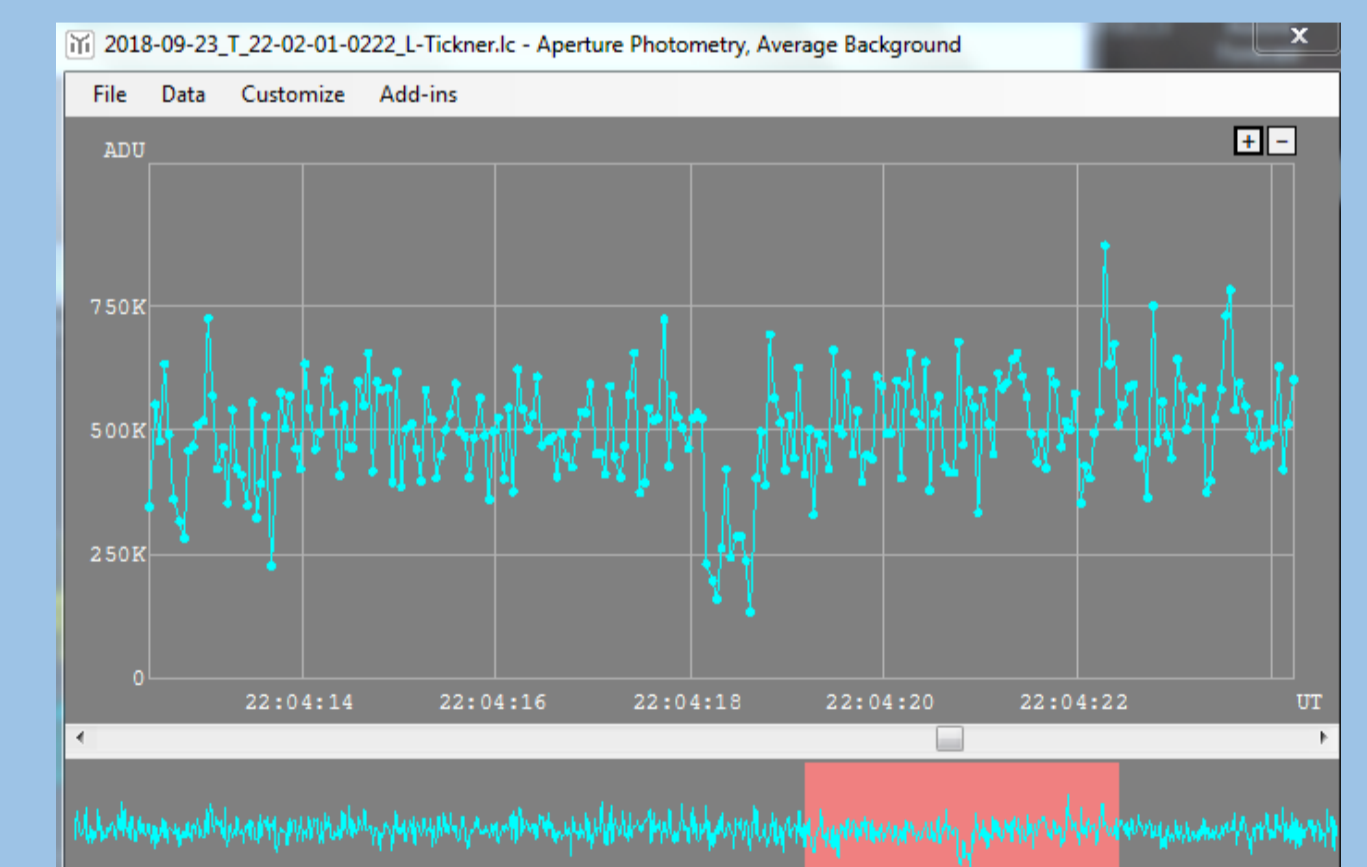
Below: graphic from OccultWatcher – with green marks from two observers.



Above: Occult 4 prediction



Occultation flux curves: above TH, below PT



ESOP XXXVIII Paris Observatory
 2019 August 31 – September 1st